



HI-FLO 9 Filter

Technical Sheet

General

Hi-Flo 9 Culligan Filters are designed to respond to industrial proposes.

They are controlled by diaphragm valves opening and closing singly to direct the water flow during service and backwash steps. A timer activates a pilot valve which opens and closes the diaphragm valves.

Backwash is automatically started by an electronic programmer, at any time of the day or night, on any day of the week. It can also be started manually and the filter will automatically resume service at the end of backwash step.

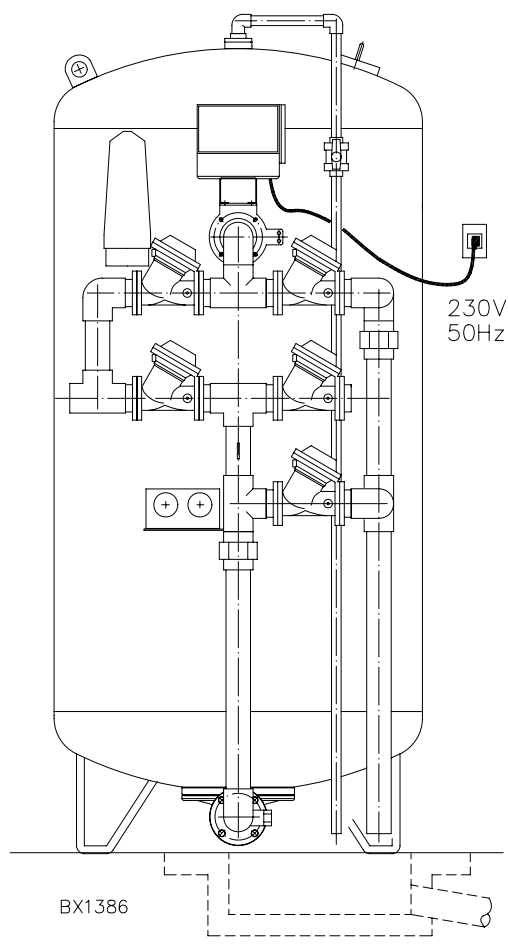
All models, up to 48", feature the hydraulic harness in Noryl PVC. Starting from 60" the harness is in cast iron, with epoxy coating.

The filter tanks are internally protected by a controlled thickness of epoxy paint, and externally coated with a neutral synthetic enamel

Culligan Hi-Flo and TWIN Filters cover any requirements for mechanical filtration and for chemico-physical filtration obtained by means of filtering layers.

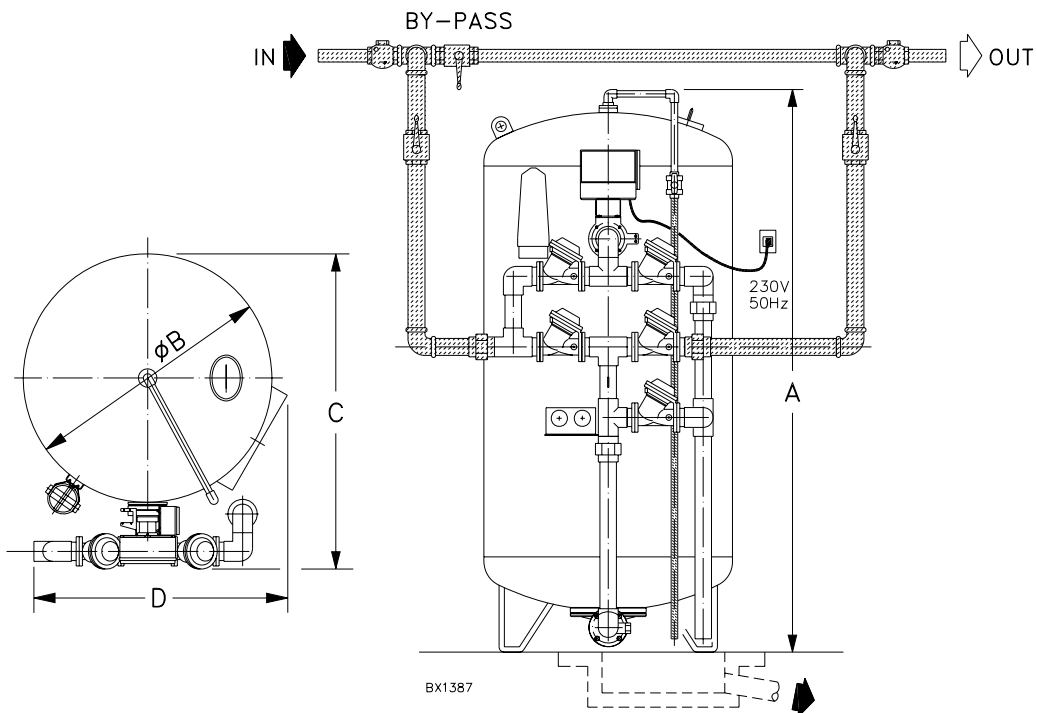
The processes employed in Hi-Flo and TWIN Filters are:

- **Filtr-Cleer (UF)**, to remove any kind of turbidity from the water, and small quantities of Iron and Manganese; the Minerals utilized are anthracite and silica, chemically inert and of unlimited life.



- **Cullar (UR)**, to remove undesirable odour, taste and colours, as well as excess Chlorine. Cullar is a granular form of activated carbon.
- **Cullneu (UU)**, to neutralize acid water. Cullneu is a granular mineral of Calcium carbonate that dissolves in proportion to the neutralized acidity.
- **Super Iron (UFP)**, for selective Iron and Manganese removal UFP Mineral has a strong catalising effect, enhanced by the injection of a proper chemical.

Hi-Flo 9 Filter



TECHNICAL SPECIFICATIONS

Models	FLOW RATES			Total washing drain m ³	Max. pressure loss bar	In/Out Fitting. dia.	Operating Weight kg	Shipping Weight kg	Overall Dimensions			
	Service min. m ³ /h	Service max. m ³ /h	Backwash m ³ /h						A mm	B dia. mm	C mm	D mm
FILTR-CLEER (turbidity)												
UF 20	2	4,7	7,9	1,5	1	1½"	770	470	1950	500	735	710
UF 24	2,8	6,7	10,9	2	1	1½"	1100	680	1985	600	835	710
UF 30	4,5	11	15,9	3	1	1½"	1700	1030	2050	750	985	765
UF 36	7	17	27,3	6	1	2	2980	1910	2130	950	1215	975
UF 48	11	27	40,9	7,5	1	2	4490	2790	2235	1200	1465	1260
CULLAR (taste-odour-colour)												
UR 20	1,2	4,7	3,4	0,5	0,3	1½"	760	460	1950	500	735	710
UR 24	2,8	6,7	4,5	1	0,3	1½"	1030	600	1985	600	835	710
UR 30	4,5	11	6,8	1,3	0,3	1½"	1600	930	2050	750	985	765
UR 36	7	17	10,9	2,1	0,3	2	2720	1650	2130	950	1215	975
UR 48	11	27	18,2	2,6	0,3	2	4100	2410	2235	1200	1465	1260
CULLNEU (acidity)												
UU 20	-	3	7,9	1,5	0,5	1½"	830	530	1950	500	735	710
UU 24	-	4,5	10,9	2	0,5	1½"	1150	725	1985	600	835	710
UU 30	-	7	15,9	3	0,5	1½"	1780	1110	2050	750	985	765
UU 36	-	11	27,3	6	0,5	2	3030	1955	2130	950	1215	975
UU 48	-	18	40,9	7,5	0,5	2	4785	3085	2235	1200	1465	1260
SUPER IRON (Iron, Manganese by dosing chlorine-compound chemicals or air injection)												
UFP 20	1,5	3	7,9	1,5	0,5	1½"	770	470	1950	500	735	710
UFP 24	2,2	4,5	10,9	2	0,5	1½"	1100	680	1985	600	835	710
UFP 30	3,5	7	15,9	3	0,5	1½"	1700	1030	2050	750	985	765
UFP 36	5,5	11	27,3	6	0,5	2	2980	1910	2130	950	1215	975
UFP 48	9	18	40,9	7	0,5	2	4490	2790	2235	1200	1465	1260

- Power supply: 230-110-24V/50-60Hz.

M003-78 – Rev. 01 – 06/2006